

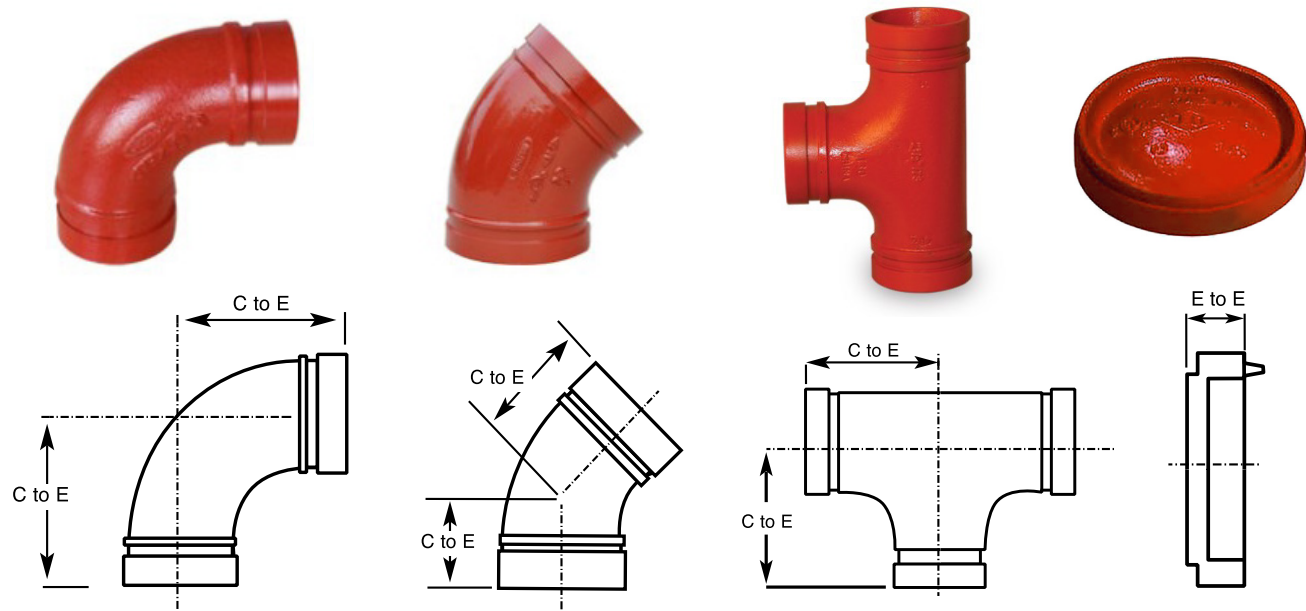
## Features

- All fittings are full flow design
- Pressure ratings of fittings tested to an operating pressure of 500 psi
- Made of durable, high-strength ductile iron conforming to ASTM A536; every lot is metallurgically tested for compliance
- Available with hot dipped galvanized coating



## Flow Data

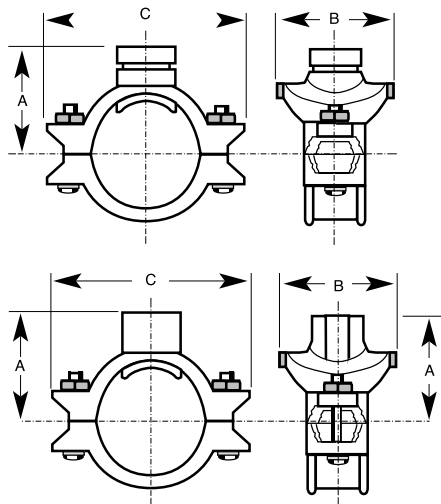
Size	ELBOW		TEE	
	90°	45°	Branch	Run
1-1/2"	2.7	1.3	6.7	2.7
2"	3.4	1.7	8.6	3.4
2-1/2"	4.1	2.1	10.3	4.1
3"	5.1	2.6	12.8	5.1
4"	6.7	3.4	16.8	6.7
5"	8.4	4.2	21.0	8.4
6"	10.1	5.1	25.3	10.1
8"	13.3	6.7	33.3	13.3



PIPE		90°		45°		TEE		CAP	
Size	Actual Size	C to E	Weight	C to E	Weight	C to E	Weight	E to E	Weight
1-1/2"	1.900	-	-	1.75	1.0	2.75	1.8	.866	0.16
2"	2.375	3.25	1.9	2.00	1.3	3.25	2.8	.866	0.26
2-1/2"	2.875	3.75	3.0	2.00	2.2	3.75	4.4	.866	0.37
3"	3.500	4.25	4.7	2.50	3.2	4.25	6.5	.866	0.52
4"	4.500	5.00	7.8	3.00	5.5	5.00	11.8	.99	0.70
5"	5.563	5.50	12.1	3.25	8.5	5.50	19.2	.99	1.14
6"	6.625	6.50	16.5	3.50	12.5	6.50	24.0	.99	1.68
8"	8.625	7.75	33.1	4.25	21.8	7.75	51.8	1.181	3.51

Features

- Mechanical Branchlet provides a direct branch connection at any location along the pipe run without welding. A hole cut along the center line of pipe will receive the hole locator collar to secure the outlet. A pressure responsive gasket molded to suit the run pipe insures leak tight joints. Cross type connections can be made utilizing upper housings only.
- Grooved & Threaded
- EPDM Gasket Temperature: 230°F



Grooved



Threaded



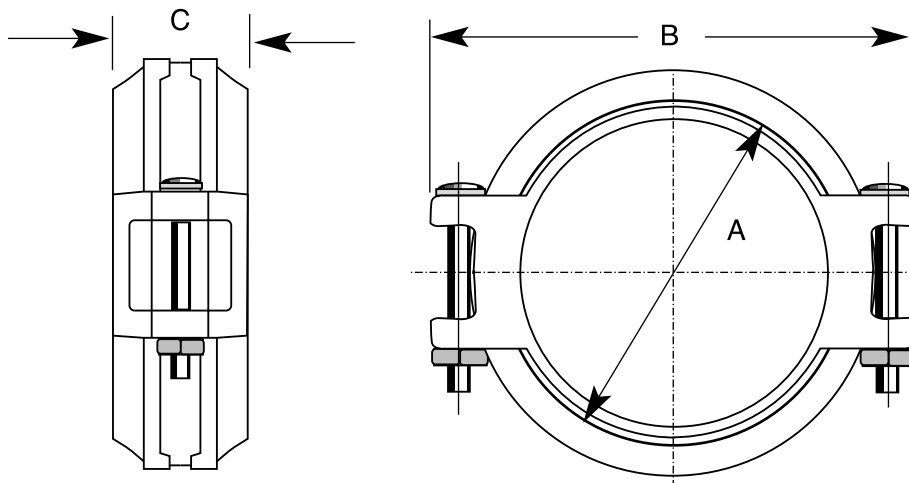
Performance Data

Outlet Size	Cv Values	Feet of Pipe	
		Grooved	Female
1/2"	15	-	2.0
3/4"	18	-	4.0
1"	22	-	5.0
1-1/4"	39	5.5	6.0
1-1/2"	52	7.0	8.0
2"	87	9.0	10.5
2-1/2"	117	11.0	12.5
3"	173	13.5	15.5
4"	346	20.0	22.0

Run Size	Outlet Size	Max Working Pressure	Hole Diameter		Grooved Dimensions			Threaded Dimensions			Weight (lbs.)	
			Hole Saw	Max Perm.	A	B	C	A	B	C	Groove	Thread
5	1-1/4"	300	2.00	2.13	4.21	3.00	8.66	3.94	3.27	8.27	6.0	6.8
	1-1/2"	300	2.00	2.13	4.21	3.40	8.66	3.94	3.62	8.27	6.2	6.6
	2"	300	2.50	2.63	4.21	3.82	8.66	3.94	3.82	8.27	6.6	6.8
	2-1/2"	300	2.75	2.88	4.21	4.41	8.66	3.94	4.41	8.27	7.5	7.9
	3"	300	3.50	3.63	4.21	4.80	8.66	3.94	4.80	8.27	8.3	8.2
6	1-1/4"	300	2.00	2.13	5.04	3.29	9.72	4.61	3.27	8.66	8.2	7.7
	1-1/2"	300	2.00	2.13	5.04	3.62	9.72	4.61	3.62	8.66	7.5	7.9
	2"	300	2.50	2.63	5.04	3.86	9.72	4.61	3.82	8.66	7.7	8.2
	2-1/2"	300	3.25	3.35	5.04	4.76	9.72	4.61	4.41	8.66	7.7	8.3
	3"	300	3.50	3.63	5.04	5.28	9.72	4.61	4.80	8.66	9.0	8.8
8	4"	300	4.50	4.63	5.04	6.18	9.72	4.61	5.20	8.66	11.0	12.8
	2"	300	2.50	2.63	5.75	3.82	12.20	5.35	3.82	12.20	11.0	11.5
	2-1/2"	300	2.75	2.88	5.75	4.41	12.20	5.35	4.41	12.20	10.0	10.8
	3"	300	3.50	3.63	5.75	4.80	12.20	5.35	4.80	12.20	12.3	12.5
	4"	300	4.50	4.63	5.75	5.28t	12.20	5.35	5.20	12.20	12.6	13.2

## Features

- Provides joint rigidity, for the support and hanging requirements of ANSI B31.1 Power Piping Code ANSI B31.9 Building Service Pipe Code and NFPA 13 Sprinkler Systems.
- Tongue and groove arrangements in housings do not permit expansion, contraction or deflection
- Available with hot dipped galvanized coatings as optional
- Supplied with pre-lubed gasket
- EPDM Gasket Temperature: 230°F



Part#	PIPE		Max Working Pressure (psi)*	Pipe End Separation (In.)	DIMENSIONS			Approx. Weight (lb.)
	Size	Actual Size			A	B	C	
1017	1-1/2"	1.900	400	0.10	2.803	3.858	1.732	1.7
1012	2"	2.375	400	0.10	3.283	5.00	1.732	1.9
1011	2-1/2"	2.875	400	0.10	3.842	5.433	1.732	1.9
1013	3"	3.500	400	0.10	4.574	6.535	1.772	2.4
1014	4"	4.500	400	0.16	5.416	7.598	1.889	3.2
1015	5"	5.563	300	0.16	6.771	8.818	1.889	4.5
1016	6"	6.625	300	0.16	7.874	9.921	1.889	5.8
1018	8"	8.625	300	0.19	10.11	12.367	2.362	10.8