

TABLE BASES





Our Table Bases are available in Table, Bar, and Counter heights and most can be cut to any custom height for a small fee.

These bases are strong and durable, made of either Cast Iron, Stainless Steel, Aluminum and now in Stamped Steel.

Most bases can be shipped via FedEx or in large quantities via an LTL carrier. Bases are available for indoor or outdoor applications.

All bases are easily assembled. Ask about our new Labor Saver options for even quicker assembly time.

LOOK FOR OUR NEW OUTDOOR SYMBOL!

NEW New featured item.


 These table bases are corrosion resistant, and can be used in outdoor covered settings.

TABLE BASES

Stainless Steel

Our Stainless Steel bases are available in round, square, lift and bolt down styles. Finish options are brushed, polished and black powder-coated. They are made of #304 or #201 Stainless Steel material and are perfect for indoor and outdoor applications.

Aluminum

The modern Aluminum styles are featured in a brushed finish and are suitable for indoor and outdoor applications.

Cast Iron

Cast Iron bases are available in a Black Matte Wrinkle and Black Semi-gloss finish. The heavy-duty bases are available in various styles, shapes, and sizes, giving you a wide range of choices to design the perfect indoor application.

Stamped Steel

Our ingenious Stamped Steel process creates a strong table base that is guaranteed to stand the test of time. The Stamped Steel bases are featured in a smooth black finish including a Labor Saver assembly method. Now available with a Zinc undercoat and a black Outdoor powder coat finish. We also offer a Chrome Stamped Steel base with a smooth finish in a knock down version.

Disclaimer

Our listed table base "Max Top Sizes" are recommendations only and are not binding. It is ultimately up to the customer to determine if the table base size will be adequate for their particular table installation. Man-made quartz and stone tops are typically heavier than wood and wood composite tops and can change the center of gravity of the table making it more unstable. Multiple table bases may be required to safely support heavier tops that exceed our size recommendations. Top size, weight and table height are all factors that need to be considered when choosing a base size. All products listed in this catalog are subject to change without prior notification. Peter Meier Inc., bears no responsibility for any changes made to product specifications after the printing of this catalog.

TABLE OF CONTENTS

4	STAINLESS STEEL	
	4000 Series - Turin Line	04
	700 Series - Adjustable Line	04
	5000 Series - Verona Line	05
	8030 Series - Nesting X Base Line	06
7	ALUMINUM	
	6000 Series - Trumpet Line	07
8	STEEL POWDER COATED BLACK	
	4000BKZ Series - Positano Line	09
	5000BKZ Series - Positano Line	09
10	CAST IRON	
	3000 Series - Round Dome Style	10
	3300 Series - Round Flat Style	11
	2100 Series - Arc Line	11
	2000 Series - Style X Line	12
	3100 Series - Sun Line	13
	Optional Spiders	13
	1000 Series - Decorative Ornamental Line	14
15	BOLT DOWN	
	3008 Series - Steel Bolt Down	15
	3009 Series - Welded Steel Bolt Down	15
	4008 Series - Stainless Steel Bolt Down	15
16	PRONTOE®	
	PronToe® - Table Base Leveler	17
18	LABOR SAVER	
	Cast Iron Labor Saver System	18
	Stamped Steel Labor Saver System	21
	Stamped Steel LS for Outdoor with PronToe® Leveler	24
23	CHROME	
	Stamped Steel Chrome	23
24	ACCESSORIES	
	Cantilevers	25
	Foot Rings	25
	Table Shox	25
	Click Catch Table Top Connector	26
	Conny Table Top Connector	26
	Purse Ring	26
	Glass Table Top Adapter	27
	Flip-Flop Table Top Hinge	27



CONTACT INFO

1255 South Park Dr,
 Kernersville, NC 27284 USA
 Tel. 336-996-7774
 Fax 336-996-1812
 E-mail: info@petermeier.com
www.PeterMeier.com

4000 SERIES - TURIN LINE

- Round base
- #304 Stainless Steel
- Brushed finish
- For indoor and outdoor applications
- Table and Bar height available
- Optional stainless steel hardware available
- Custom cut is possible for standard and bolt down units



Description - TABLE HEIGHT	Item Number	Base Spread	Top Plate	Column Diameter	Overall Height	Max Top Size	Packed
Table Base 17", Round	4017-28-SS	17"	12" Square	3"	28-1/2"	30" x 30"	1 Base
Table Base 22", Round	4022-28-SS	22"	12" Square	3"	28-1/2"	36" x 36"	1 Base
Table Base 29", Round	4029-28-SS *	29"	15" Square	3"	28-1/2"	48" Round	1 Base
Table Base 29". Round Tri-column	4029-28-SS-TRI*	29"	(x3) 12" Square	3"	28-1/2"	60" Round	1 Base
S.S. Rod and Hardware - Table Ht.	ROD-28-BKZ	-	-	-	-	-	Optional

Description - BAR HEIGHT	Item Number	Base Spread	Top Plate	Column Diameter	Overall Height	Max Top Size	Packed
Table Base 17", Round	4017-43-SS	17"	12" Square	3"	40-1/4"	30" x 30"	1 Base
Table Base 22", Round	4022-43-SS	22"	12" Square	3"	40-1/4"	36" x 36"	1 Base
Table Base 29", Round	4029-43-SS *	29"	15" Square	3"	40-1/4"	42" Round	1 Base
Table Base 29". Round Tri-column	4029-43-SS-TRI*	29"	(x3) 12" Square	3"	40-1/4"	60" Round	1 Base
S.S. Rod and Hardware - Bar Ht.	ROD-43-BKZ	-	-	-	-	-	Optional

* These Units are not UPSable

700 SERIES - ADJUSTABLE LINE

- Round base
- #201 Stainless Steel
- Brushed base plate with polished column finish
- Steel top plate
- Black Matte finish available
- For indoor and outdoor applications
- Easy adjustable pneumatic foot pedal
- Manual column lock mechanism
- Table and Bar height all-in-1
- This series cannot be cut down due to the pneumatic mechanism



Description	Item Number	Base Spread	Top Plate	Column Diameter	Height Adjustment	Finish	Max Top Size	Packed
Round Lift Base, 21"	792-0519-ST	21"	10" Square	2-3/8"	29-1/2" - 43-1/2"	Brushed SS	36" x 36"	1 Base
Round Lift Base, 21"	792-0519-MT	21"	10" Square	2-3/8"	29-1/2" - 43-1/2"	Matte Black SS	36" x 36"	1 Base

5000 SERIES - VERONA LINE

- Square base
- With a round column
- #304 Stainless Steel
- Brushed finish
- For indoor and outdoor applications
- Table and Bar height available
- Optional stainless steel hardware available
- Custom cut is possible for this style



Description - TABLE HEIGHT	Item Number	Base Spread	Top Plate	Column Diameter	Overall Height	Max Top Size	Packed
Table Base 17", Square	5017-28-SS	17"	12" Square	3"	28-1/2"	30" x 30"	1 Base
Table Base 22", Square	5022-28-SS	22"	12" Square	3"	28-1/2"	36" x 36"	1 Base
Table Base 30", Square	5030-28-SS *	29"	15" Square	3"	28-1/2"	48" x 48"	1 Base
Table Base 16" x 28", Rectangular	50RE-28-SS *	16" x 28"	12" Square (x2)	3" (x2)	28-1/2"	36" x 48"	1 Base
S.S. Rod and Hardware - Table Ht.	ROD-28-BKZ	-	-	-	-	-	Optional

Description - BAR HEIGHT	Item Number	Base Spread	Top Plate	Column Diameter	Overall Height	Max Top Size	Packed
Table Base 17", Square	5017-43-SS	17"	12" Square	3"	40-1/4"	30" x 30"	1 Base
Table Base 22", Square	5022-43-SS	22"	12" Square	3"	40-1/4"	36" x 36"	1 Base
Table Base 30", Square	5030-43-SS *	29"	15" Square	3"	40-1/4"	42" x 42"	1 Base
Table Base 16" x 28", Rectangular	50RE-43-SS *	16" x 28"	12" Square (x2)	3" (x2)	40-1/4"	36" x 48"	1 Base
S.S. Rod and Hardware - Bar Ht.	ROD-43-BKZ	-	-	-	-	-	Optional

5000 SERIES - VERONA LINE

- Square base
- With a square column
- #304 Stainless Steel
- Brushed finish
- For indoor and outdoor applications
- Table and Bar height available
- Optional stainless steel hardware available
- Custom cut is possible for this style



Description - TABLE HEIGHT	Item Number	Base Spread	Top Plate	Column Width	Overall Height	Max Top Size	Packed
Table Base 17", Square	5017-28-SS-SQ	17"	12" Square	3"	28-1/2"	30" x 30"	1 Base
Table Base 22", Square	5022-28-SS-SQ	22"	12" Square	3"	28-1/2"	36" x 36"	1 Base
Table Base 30", Square	5030-28-SS-SQ *	29"	15" Square	3"	28-1/2"	48" x 48"	1 Base
Table Base 16" x 28", Rectangular	50RE-28-SS-SQ *	16" x 28"	12" Square (x2)	3" (x2)	28-1/2"	36" x 48"	1 Base
S.S. Rod and Hardware - Table Ht.	ROD-28-BKZ	-	-	-	-	-	Optional

Description - BAR HEIGHT	Item Number	Base Spread	Top Plate	Column Width	Overall Height	Max Top Size	Packed
Table Base 17", Square	5017-43-SS-SQ	17"	12" Square	3"	40-1/4"	30" x 30"	1 Base
Table Base 22", Square	5022-43-SS-SQ	22"	12" Square	3"	40-1/4"	36" x 36"	1 Base
Table Base 30", Square	5030-43-SS-SQ *	29"	15" Square	3"	40-1/4"	42" x 42"	1 Base
Table Base 16" x 28", Rectangular	50RE-43-SS-SQ *	16" x 28"	12" Square (x2)	3" (x2)	40-1/4"	36" x 48"	1 Base
S.S. Rod and Hardware - Bar Ht.	ROD-43-BKZ	-	-	-	-	-	Optional

* These Units are not UPSable

8030 SERIES - NESTING X LINE

- Style X base
- #201 Stainless Steel
- Brushed finish
- Mounting plate with Flip-Top mechanism
- Nesting design
- 3/4" cut-out for wire pass-through
- 4 Locking casters
- For indoor and outdoor applications
- Table and Bar height available
- Custom colors available. Please inquire
- This series cannot be cut down.



Description - TABLE HEIGHT	Item Number	Base Spread	Top Plate	Column Diameter	Overall Height	Max Top Size	Packed
Table Base 30", Nesting X Base	8030-29-SS	30"	17" Flip-Top Spider	2-3/8"	29-1/4"	36" Round	1 Base

Description - BAR HEIGHT	Item Number	Base Spread	Top Plate	Column Diameter	Overall Height	Max Top Size	Packed
Table Base 30", Nesting X Base	8030-41-SS	30"	17" Flip-Top Spider	2-3/8"	40-1/4"	36" Round	1 Base



STAINLESS STEEL SOLUTIONS

6000 SERIES - TRUMPET LINE

- Round Trumpet base
- Aluminum
- Brushed finish
- For indoor and outdoor applications
- Table and Bar height available
- Custom cut is possible for this style, but requires an extra welding charge for the internal tab.



Description - TABLE HEIGHT	Item Number	Base Spread	Top Plate	Column Diameter	Overall Height	Max Top Size	Packed
Table Base 20", Trumpet	6020-28-AL	20"	12" Square	2"	28-1/2"	30" x 30"	1 Base
Table Base 22", Trumpet	6022-28-AL	22"	12" Square	2-3/8"	28-1/2"	36" x 36"	1 Base

Description - BAR HEIGHT	Item Number	Base Spread	Top Plate	Column Diameter	Overall Height	Max Top Size	Packed
Table Base 20", Trumpet	6020-43-AL	20"	12" Square	2"	40-1/2"	30" x 30"	1 Base
Table Base 22", Trumpet	6022-43-AL	22"	12" Square	2-3/8"	40-1/2"	36" x 36"	1 Base



POSITANO LINE



4000BKZ SERIES - POSITANO LINE

- Round base
- With round column
- Steel powder coated
- Smooth black matte finish with zinc undercoat
- For indoor or outdoor applications
- Table and bar height available
- Optional stainless steel hardware available
- Custom cut is possible for this style
- Custom colors available - Please call to inquire



Description - TABLE HEIGHT	Item Number	Base Spread	Top Plate	Column Diameter	Overall Height	Max Top Size	Packed
Table Base 17", Round - Black	4017-28-BKZ	17"	12" Square	3"	28-1/2"	30" x 30"	1 Base
Table Base 22", Round - Black	4022-28-BKZ	22"	12" Square	3"	28-1/2"	36" x 36"	1 Base
Table Base 29", Round - Black	4029-28-BKZ-4*	29"	18" Square	4"	28-1/2"	54" Round	1 Base
Table Base 29" TRI Round - Black	4029-28-BKZ-TRI*	29"	12" Square (x3)	3" (x3)	28-1/2"	60" Round	1 Base
S.S. Rod and Hardware - Table Ht.	ROD-28-BKZ	-	-	-	-	-	Optional

Description - BAR HEIGHT	Item Number	Base Spread	Top Plate	Column Diameter	Overall Height	Max Top Size	Packed
Table Base 17", Round - Black	4017-43-BKZ	17"	12" Square	3"	40-1/4"	30" x 30"	1 Base
Table Base 22", Round - Black	4022-43-BKZ	22"	12" Square	3"	40-1/4"	36" x 36"	1 Base
Table Base 29", Round - Black	4029-43-BKZ-4*	29"	18" Square	4"	40-1/4"	48" Round	1 Base
Table Base 29" TRI Round - Black	4029-43-BKZ-TRI*	29"	12" Square (x3)	3" (x3)	40-1/4"	60" Round	1 Base
S.S. Rod and Hardware - Bar Ht.	ROD-43-BKZ	-	-	-	-	-	Optional

5000BKZ SERIES - POSITANO LINE

- Square base
- With square column
- Steel powder coated
- Smooth black matte finish with zinc undercoat
- For indoor or outdoor applications
- Table and bar height available
- Optional stainless steel hardware available
- Custom cut is possible for this style
- Custom colors available - Please call to inquire



Description - TABLE HEIGHT	Item Number	Base Spread	Top Plate	Column Diameter	Overall Height	Max Top Size	Packed
Table Base 17", Square - Black	5017-28-BKZ	17"	12" Square	3"	28-1/2"	30" x 30"	1 Base
Table Base 22", Square - Black	5022-28-BKZ	22"	12" Square	3"	28-1/2"	36" x 36"	1 Base
Table Base 29", Square - Black	5029-28-BKZ-4 *	29"	18" Square	4"	28-1/2"	54" x 54"	1 Base
Table Base 16" x 28", Rect. Black	50RE-28-BKZ	16" x 28"	12" Square (x2)	3" (x2)	28-1/2"	36" x 48"	1 Base
S.S. Rod and Hardware - Table Ht.	ROD-28-BKZ	-	-	-	-	-	Optional

Description - BAR HEIGHT	Item Number	Base Spread	Top Plate	Column Diameter	Overall Height	Max Top Size	Packed
Table Base 17", Square - Black	5017-43-BKZ	17"	12" Square	3"	40-1/4"	30" x 30"	1 Base
Table Base 22", Square - Black	5022-43-BKZ	22"	12" Square	3"	40-1/4"	36" x 36"	1 Base
Table Base 29", Square - Black	5029-43-BKZ-4 *	29"	18" Square	4"	40-1/4"	48" x 48"	1 Base
Table Base 16" x 28", Rect. - Black	50RE-43-BKZ	16" x 28"	12" Square (x2)	3" (x2)	40-1/4"	36" x 48"	1 Base
S.S. Rod and Hardware - Bar Ht.	ROD-43-BKZ	-	-	-	-	-	Optional

* These Units are not UPSable

Cast Iron - Matte Black

3000 SERIES - ROUND DOME STYLE

- Round base
- Dome profile
- Cast Iron
- Black Matte Wrinkle finish
- For indoor applications only
- Table and Bar height available
- Custom cut is possible for this style



Description - TABLE HEIGHT	Item Number	Base Spread	Top Plate	Column Diameter	Overall Height	Max Top Size	Packed
Table Base 17" Round	3017-29-MT	17"	9" Spider	3"	28-1/4"	30" x 30"	1 Base
Table Base 18" Round	3018-29-MT	18"	9" Spider	3"	28-1/4"	30" x 30"	1 Base
Table Base 22" Round	3022-29-MT	22"	9" Spider	3"	28-1/4"	36" x 36"	1 Base
Table Base 22" Round	3022-29-MT-4	22"	14" Spider	4"	28-1/4"	36" x 36"	1 Base
Table Base 26" Round	3026-29-MT	26"	14" Spider	4"	28-1/4"	42" Round	1 Base
Table Base 28" Round	3028-29-MT	28"	14" Spider	4"	28-1/4"	54" Round	1 Base
Table Base 30" Round	3030-29-MT	30"	14" Spider	4"	28-1/4"	60" Round	1 Base

Description - BAR HEIGHT	Item Number	Base Spread	Top Plate	Column Diameter	Overall Height	Max Top Size	Packed
Table Base 17" Round	3017-41-MT	17"	9" Spider	3"	40-1/4"	30" x 30"	1 Base
Table Base 18" Round	3018-41-MT	18"	9" Spider	3"	40-1/4"	30" x 30"	1 Base
Table Base 22" Round	3022-41-MT	22"	9" Spider	3"	40-1/4"	36" x 36"	1 Base
Table Base 22" Round	3022-41-MT-4	22"	14" Spider	4"	40-1/4"	36" x 36"	1 Base
Table Base 22" Round, w/ Foot Ring	3022-41-MT-FR	22"	9" Spider	3"	40-1/4"	36" x 36"	1 Base
Table Base 26" Round	3026-41-MT	26"	14" Spider	4"	40-1/4"	42" Round	1 Base
Table Base 28" Round	3028-41-MT	28"	14" Spider	4"	40-1/4"	48" Round	1 Base
Table Base 30" Round	3030-41-MT	30"	14" Spider	4"	40-1/4"	54" Round	1 Base

BASE WEIGHT FOR 3000 SERIES

- A base weight helps to stabilize a table base when a heavy table top is used
- For 3000 series dome profile table bases only
- 20 lbs. Round base weight
- Cast Iron
- For indoor applications only



Description	Item Number	Weight	Diameter	Packed
Base Weight for Round Dome Bases	3000-20-BW	20 lbs.	10"	1 Each

3300 SERIES - ROUND FLAT STYLE

- Round base
- Flat profile
- Cast Iron
- Black Matte Wrinkle finish
- For indoor applications only
- Table and Bar height available
- Custom cut is possible for this style



Description - TABLE HEIGHT	Item Number	Base Spread	Top Plate	Column Diameter	Overall Height	Max Top Size	Packed
Table Base 18" Round	3318-29-MT	18"	9" Spider	3"	28-1/4"	30" x 30"	1 Base
Table Base 22" Round	3322-29-MT	22"	9" Spider	3"	28-1/4"	36" x 36"	1 Base
Table Base 22" Round	3322-29-MT-4	22"	14" Spider	4"	28-1/4"	36" x 36"	1 Base
Table Base 26" Round	3326-29-MT	26"	14" Spider	4"	28-1/4"	42" Round	1 Base
Table Base 30" Round	3330-29-MT	30"	14" Spider	4"	28-1/4"	60" Round	1 Base

Description - BAR HEIGHT	Item Number	Base Spread	Top Plate	Column Diameter	Overall Height	Max Top Size	Packed
Table Base 18" Round	3318-41-MT	18"	9" Spider	3"	40-1/4"	30" x 30"	1 Base
Table Base 22" Round	3322-41-MT	22"	9" Spider	3"	40-1/4"	36" x 36"	1 Base
Table Base 22" Round	3322-41-MT-4	22"	14" Spider	4"	40-1/4"	36" x 36"	1 Base
Table Base 22" Round w/ Foot Ring	3322-41-MT-FR	22"	9" Spider	3"	40-1/4"	36" x 36"	1 Base
Table Base 26" Round	3326-41-MT	26"	14" Spider	4"	40-1/4"	42" Round	1 Base
Table Base 30" Round	3330-41-MT	30"	14" Spider	4"	40-1/4"	54" Round	1 Base

2100 SERIES - ARC LINE

- Arc base
- Cast Iron
- Black Matte Wrinkle finish
- For indoor applications only
- Custom cut is possible for this style



End Table Style

3-Leg

4-Leg

Description	Item Number	Base Spread	Top Plate	Column Diameter	Overall Height	Max Top Size	Packed
Table Base 3" x 24", Arc, End	2101-29-MT	3" x 24"	14" Spider	3"	28-1/4"	36" x 60" with 2 bases	1 Base
Table Base 24", Arc, 3-leg	2102-29-MT	24" (3 legs)	14" Spider	3"	28-1/4"	36" x 36"	1 Base
Table Base 24" x 24", Arc, 4-leg	2124-29-MT	24" x 24"	14" Spider	3"	28-1/4"	40" x 40"	1 Base

Cast Iron - Matte Black

2000 SERIES - STYLE X LINE

- Style X base
- Cast Iron
- Black Matte Wrinkle finish
- For indoor applications only
- Table and Bar height available
- Custom cut is possible for this style



Description - TABLE HEIGHT	Item Number	Base Spread	Top Plate	Column Diameter	Overall Height	Max Top Size	Packed
Table Base 5" x 22" End Style	2001-28-MT	5" x 22"	9" Spider	3"	28-1/4"	36" x 60" with 2 bases	1 Base
Table Base 5" x 30" End Style	2003-28-MT	5" x 30"	9" Spider	3"	28-1/4"	42" x 54" with 2 bases	1 Base
Table Base 22" x 30", Style X	2002-28-MT	22" x 30"	9" Spider	3"	28-1/4"	36" x 42"	1 Base
Table Base 24" x 30", Style X	2004-28-MT	24" X 30"	9" Spider	3"	28-1/4"	36" x 42"	1 Base
Table Base 22" x 22", Style X	2022-28-MT	22" x 22"	9" Spider	3"	28-1/4"	30" x 30"	1 Base
Table Base 30" x 30", Style X	2030-28-MT	30" x 30"	9" Spider	3"	28-1/4"	36" x 36"	1 Base
Table Base 33" x 33", Style X	2033-28-MT	33" x 33"	14" Spider	3"	28-1/4"	42" x 42"	1 Base
Table Base 36" x 36", Style X	2036-28-MT	36" x 36"	14" Spider	4"	28-1/4"	54" Round	1 Base
Table Base 40" x 40", Style X	2040-28-MT	40" x 40"	24" Spider	4"	28-1/4"	60" Round	1 Base

Description - BAR HEIGHT	Item Number	Base Spread	Top Plate	Column Diameter	Overall Height	Max Top Size	Packed
Table Base 5" x 22" End Style	2001-40-MT	5" x 22"	9" Spider	3"	40-1/4"	36" x 60" with 2 bases	1 Base
Table Base 5" x 30" End Style	2003-40-MT	5" x 30"	9" Spider	3"	40-1/4"	42" x 54" with 2 bases	1 Base
Table Base 22" x 30", Style X	2002-40-MT	22" x 30"	9" Spider	3"	40-1/4"	36" x 42"	1 Base
Table Base 24" x 30", Style X	2004-40-MT	24" X 30"	9" Spider	3"	40-1/4"	36" x 42"	1 Base
Table Base 22" x 22", Style X	2022-40-MT	22" x 22"	9" Spider	3"	40-1/4"	30" x 30"	1 Base
Table Base 30" x 30", Style X	2030-40-MT	30" x 30"	9" Spider	3"	40-1/4"	36" x 36"	1 Base
Table Base 33" x 33", Style X	2033-40-MT	33" x 33"	14" Spider	3"	40-1/4"	42" x 42"	1 Base
Table Base 36" x 36", Style X	2036-40-MT	36" x 36"	14" Spider	4"	40-1/4"	48" Round	1 Base
Table Base 40" x 40", Style X	2040-40-MT	40" x 40"	24" Spider	4"	40-1/4"	54" Round	1 Base

3100 SERIES - SUN LINE

- Sun base
- Cast Iron
- Black Matte Wrinkle finish
- For indoor applications only
- Table and Bar height available
- Custom cut is possible for this style



Description - TABLE HEIGHT	Item Number	Base Spread	Top Plate	Column Diameter	Overall Height	Max Top Size	Packed
Table Base 17" Sun	3118-29-MT	17"	9" Spider	3"	28-1/4"	30" x 30"	1 Base
Table Base 22" Sun	3122-29-MT	22"	9" Spider	3"	28-1/4"	34" x 34"	1 Base
Table Base 28" Sun	3128-29-MT	28"	14" Spider	3"	28-1/4"	48" Round	1 Base

Description - BAR HEIGHT	Item Number	Base Spread	Top Plate	Column Diameter	Overall Height	Max Top Size	Packed
Table Base 17" Sun	3118-41-MT	17"	9" Spider	3"	40-1/4"	24" x 24"	1 Base
Table Base 22" Sun	3122-41-MT	22"	9" Spider	3"	40-1/4"	32" x 32"	1 Base
Table Base 28" Sun	3128-41-MT	28"	14" Spider	3"	40-1/4"	42" Round	1 Base

OPTIONAL SPIDERS

- 9", 12", 14", 19", and 24" Spiders available.
- Optional spider top plate sizes are only for the following models:
 - 3000 Series - Round Dome Style (Except Bolt Down)
 - 3300 Series - Round Flat Style
 - 2100 Series - Arc Line
 - 2000 Series - Style X Line
 - 3100 Series - Sun Line



9"



12"



14"



19"



24"

Description	Item Number	Size	Compatible Column	Packed
9" Cast Iron Spider	SPIDER-9	9" Spider	3"	1 Each
12" Cast Iron Spider	SPIDER-12	12" Spider	3" and 4"	1 Each
14" Cast Iron Spider	SPIDER-14	14" Spider	3" and 4"	1 Each
19" Cast Iron Spider	SPIDER-19	19" Spider	3" and 4"	1 Each
24" Cast Iron Spider	SPIDER-24	24" Spider	4"	1 Each

1000 SERIES - DECORATIVE LINE

- Decorative 3 or 4 leg base
- Cast Iron
- Black Matte Wrinkle finish
- For indoor applications only
- This series cannot be cut down due to the decorative column



1022-29-MT

1026-29-MT

1032-29-MT

Description	Item Number	Base Spread	Top Plate	Column Diameter	Overall Height	Max Top Size	Packed
Table Base 22", Decorative, 3-leg	1022-29-MT	22" (3 legs)	13" Spider	3"	28"	30" Round	1 Base
Table Base 26", Decorative, 3-leg	1026-29-MT	26" (3 legs)	13" Spider	3"	28"	36" Round	1 Base
Table Base 32" x 32" Decorative, 4-leg	1032-29-MT	32" x 32"	15" Spider	4"	28"	54" Round	1 Base

ORNAMENTAL LINE

- Ornamental Cast Iron
- Semi-gloss black finish
- Attractive and beautiful design
- For indoor applications only
- This series cannot be cut down due to the Ornamental column



16"

24"

17"

24"

24"

Description - TABLE HEIGHT	Item Number	Base Spread	Top Plate	Overall Height	Max Top Size	Packed
Table Base 16" Round, Ornamental	B1C5-29-MT-16	16"	15" Spider	28-3/8"	30" Round	1 Base
Table Base 24" Round, Ornamental	B1C5-29-MT-24	24"	15" Spider	28-3/8"	48" Round	1 Base
Table Base 17" x 17" Ornamental	B6C6-29-MT	17" x 17"	11" Spider	29"	24" x 24"	1 Base
Table Base 24" x 24" Ornamental	B8C5-29-MT	24" x 24"	15" Spider	29"	48" Round	1 Base

Description - BAR HEIGHT	Item Number	Base Spread	Top Plate	Overall Height	Max Top Size	Packed
Table Base 24" x 24" Ornamental	B8C5-40-MT	24" x 24"	15" Spider	41"	42" Round	1 Base

3008 - STEEL BOLT DOWN

- Bolt down unit
- Steel
- Black matte wrinkle finish
- For indoor applications only
- Table and Bar height available
- Custom cut is possible for this style
- PMI suggests the use of lead or steel anchor inserts to fasten the bolt down units to the floor (Not included)



Description	Item Number	Base Spread	Top Plate	Column Diameter	Overall Height	Max Top Size	Packed
Table Base 8", Round, Bolt Down	3008-28-MT	8"	9-3/4" Square	3"	28 1/4"	24" x 24"	1 Base
Table Base 8", Round, Bolt Down	3008-43-MT	8"	9-3/4" Square	3"	40-3/4"	24" x 24"	1 Base

3009 - WELDED STEEL BOLT DOWN

- Bolt down unit
- Steel
- Single welded base, column, and top plate
- Black Matte Smooth finish
- For indoor applications only
- Table and Bar height available
- Unit is shipped completely assembled and ready to install
- T-Wrench is used to fasten the anchor bolt (Sold Separately)
- Includes:
 - 1 - Anchor Bolt
 - 1 - Anchor Insertion Tool
 - 12 - #10 Screws



Description	Item Number	Base Spread	Top Plate	Column Diameter	Overall Height	Max Top Size	Packed
Table Base 9-1/2", Bell, Bolt Down	3009-28-MT	9-1/2"	11" Square	3"	28-3/4"	24" x 24"	1 Base
Table Base 9-1/2", Bell, Bolt Down	3009-43-MT	9-1/2"	11" Square	3"	40-3/4"	24" x 24"	1 Base
T-Wrench to Fasten Anchor Bolt	3009-T-WRENCH	-	-	-	-	-	1 Wrench

4008 - STAINLESS STEEL BOLT DOWN

- Bolt down unit
- #304 Stainless Steel
- Brushed finish
- For indoor and outdoor applications
- Table, Counter, and Bar height available
- Custom cut is possible for this style
- Includes:
 - 4 - Anchor Bolts



Description	Item Number	Base Spread	Top Plate	Column Diameter	Overall Height	Max Top Size	Packed
Table Base 8", Round, Bolt Down	4008-28-SS	8"	12" Square	3"	28-1/2"	24" x 24"	1 Base
Table Base 8", Round, Bolt Down	4008-34-SS	8"	12" Square	3"	34-1/2"	24" x 24"	1 Base
Table Base 8", Round, Bolt Down	4008-43-SS	8"	12" Square	3"	40-1/4"	24" x 24"	1 Base



**THE BEST TABLE LEVELER
IN THE INDUSTRY**



PRONTOE® TABLE LEVELER

PMI introduces **PronToe®**, a new and efficient way to keep table bases balanced. Easily adjust a table base by using your foot.

- Made out of High-impact thermoplastic with over mold stainless steel insert
- 1" (25mm) Height table base leveler
- 7/16" (11mm) adjustment range on black anodized steel bolt assembly
- ABS Glide for clean and maintenance-free solution
- 180lbs. load capacity per leveler
- Fast and Easy to install with just a screwdriver
- Compatible with all PMI and other X Style table bases with 1/4"-20 thread
- Includes: 4 Levelers and mounting hardware per Box or Polybag



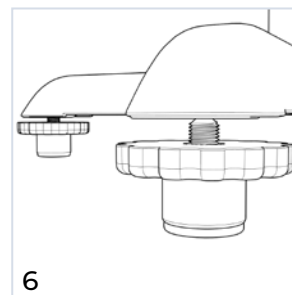
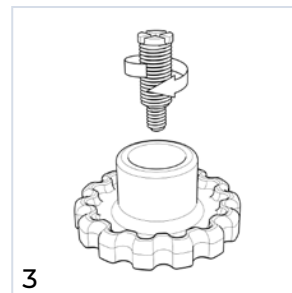
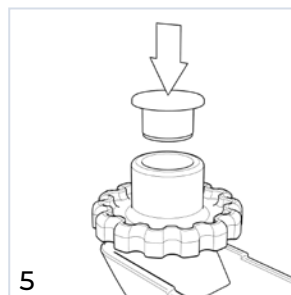
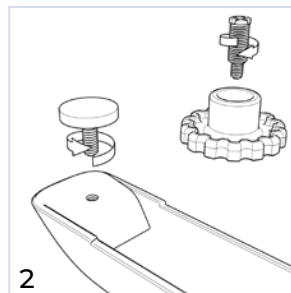
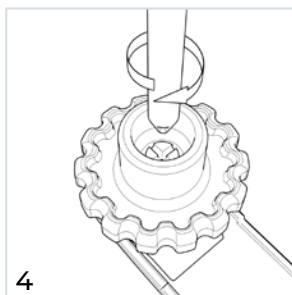
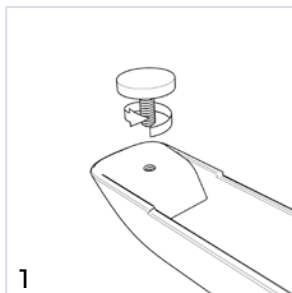
Retail Packaging is available!



3 Piece assembly



4 Levelers per box



Description	Item Number	Thread Size	Finish	Packed
PronToe® - Set of 4 Levelers, Retail Display Box	PRONTOE-R	1/4" - 20 thread	Black	4 per Box
PronToe® - Set of 4 Levelers, Polybag	PRONTOE-POLY	1/4" - 20 thread	Black	4 per Polybag

CAST IRON LABOR SAVER SYSTEM

- Special concept designed for expedited job assembly in hospitality applications
- Column, Rod and Top Plate are welded together to make your installation quick and easy
- All Items can be shipped directly to your job site
- **To order, choose a column height and pair it with a Style X or Round base plate**
(Ex. **LS-3-TABLE** + **2022-BP**)

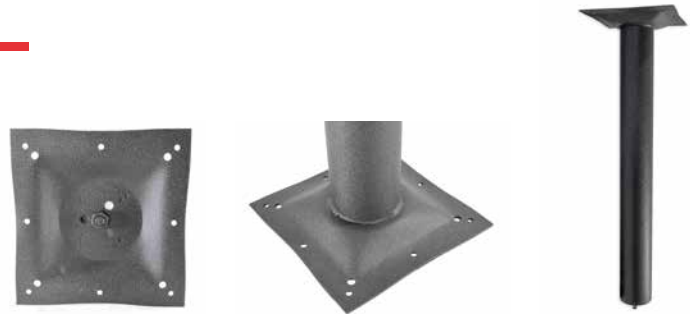


Round Style



Style X

COLUMN WITH WELDED TOP PLATE



Description	Item Number	Top Plate	Column Diameter	Assembled Height	Bulk Packed
Labor Saver 3" Column / 8" Plate / Table Ht.	LS-3-TABLE	7-3/4" Square	3"	28-1/4"	8 / Box
Labor Saver 3" Column / 8" Plate / Bar Ht.	LS-3-BAR	7-3/4" Square	3"	40-1/4"	8 / Box
Labor Saver 4" Column / 10" Plate / Table Ht.	LS-4-TABLE	9-3/4" Square	4"	28-1/4"	8 / Box
Labor Saver 4" Column / 10" Plate / Bar Ht.	LS-4-BAR	9-3/4" Square	4"	40-1/4"	8 / Box

BASE PLATE - STYLE X



End Table Style



Description	Item Number	Base Spread	For Column Diameter	Max Top Size	Bulk Packed
Base Plate / 5" x 22" / Black Matte / End Style	2001-BP-1	5" x 22"	3"	36" x 60" (with 2 bases)	6 / Box
Base Plate / 22" x 30" / Black Matte / Style X	2002-BP	22" x 30"	3"	36" x 42"	5 / Box
Base Plate / 5" x 30" / Black Matte / End Style	2003-BP	5" x 30"	3"	42" x 54" (with 2 bases)	10 / Box
Base Plate / 24" x 30" / Black Matte / Style X	2004-BP	24" x 30"	3"	36" x 42"	5 / Box
Base Plate / 22" x 22" / Black Matte / Style X	2022-BP	22" x 22"	3"	30" x 30"	6 / Box
Base Plate / 30" x 30" / Black Matte / Style X	2030-BP	30" x 30"	3"	36" x 36"	5 / Box
Base Plate / 33" x 33" / Black Matte / Style X	2033-BP	33" x 33"	3"	42" x 42"	5 / Box
Base Plate / 36" x 36" / Black Matte / Style X	2036-BP	36" x 36"	4"	48" Round	5 / Box
Base Plate / 40" x 40" / Black Matte / Style X	2040-BP	40" x 40"	4"	54" Round	2 / Box

BASE PLATE - ROUND FLAT STYLE



Description	Item Number	Base Spread	For Column Diameter	Max Top Size	Packed
Base Plate / 18" Round / Black Matte / Flat Style	3318-BP	18"	3"	30" X 30"	2 / Box
Base Plate / 22" Round / Black Matte / Flat Style	3322-BP	22"	3"	36" x 36"	2 / Box
Base Plate / 22" Round / Black Matte / Flat Style	3322-BP-4	22"	4"	36" x 36"	2 / Box
Base Plate / 26" Round / Black Matte / Flat Style	3326-BP-4	26"	4"	42" Round	2 / Box
Base Plate / 30" Round / Black Matte / Flat Style	3330-BP	30"	4"	54" Round	1 Each

BASE PLATE - ROUND DOME STYLE



Description	Item Number	Base Spread	For Column Diameter	Max Top Size	Packed
Base Plate / 17" Round / Black Matte / Dome Style	3017-BP	17"	3"	30" x 30"	2 / Box
Base Plate / 18" Round / Black Matte / Dome Style	3018-BP	18"	3"	32" x 32"	2 / Box
Base Plate / 22" Round / Black Matte / Dome Style	3022-BP	22"	3"	34" x 34"	2 / Box
Base Plate / 22" Round / Black Matte / Dome Style	3022-BP-4	22"	4"	36" x 36"	2 / Box
Base Plate / 26" Round / Black Matte / Dome Style	3026-BP	26"	4"	42" Round	2 / Box
Base Plate / 28" Round / Black Matte / Dome Style	3028-BP	28"	4"	48" Round	2 / Box
Base Plate / 30" Round / Black Matte / Dome Style	3030-BP	30"	4"	54" Round	1 Each

BOLT DOWN LABOR SAVER SYSTEM

- Special concept designed for expedited job assembly in hospitality applications
- Column, Rod and Top Plate are welded together to make your installation quick and easy
- All Items can be shipped directly to your job site
- **To order, choose a column height and pair it with the base plate**
(Ex. **LS-3-TABLE-2** + **3008-BP**)

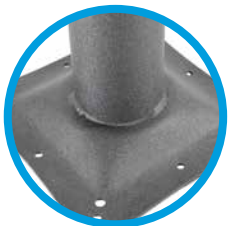


Bolt Down Style

Description	Item Number	Top Plate	Column Diameter	Assembled Height	Packed
Labor Saver 3" Column / 10" Plate / Table Ht. (Bolt Down)	LS-3-TABLE-2	9-3/4" Square	3"	28-1/4"	1 Each
Labor Saver 3" Column / 10" Plate / Bar Ht. (Bolt Down)	LS-3-BAR-2	9-3/4" Square	3"	40-1/4"	1 Each

Description	Item Number	Base Spread	For Column Diameter	Max Top Size	Packed
Base Plate & Cover / 8" / Black Matte / (Bolt Down)	3008-BP	8"	3"	24" x 24"	10 / Box

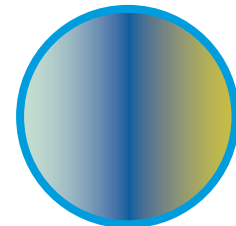
STAMPED STEEL TABLE BASES



LABOR SAVER SYSTEM
Welded top and column for quick
and easy installation



STRONG
Long lasting material



CUSTOM COLORS
To match any decor

STAMPED STEEL LABOR SAVER SYSTEM

- Column and Spider are welded together and can be assembled to the base plate with only one bolt
- Stamped steel design
- Smooth matte black finish
- Custom colors are available
Please call to inquire at 1-800-222-6941
- **To order, choose a column height and pair it with a Style X or Round base plate**
(Ex. **LS-3-DHS** + **3322-BPS**)



End Style

Style X

Round Style



- Stamped Steel
- Welded Column and Top Plate
- Available in Round and Style-X
- Custom Colors Available
- Single Bolt Assembly
- Fastest Table Base Assembly in the Market

COLUMN WITH WELDED TOP PLATE

FOR STAMPED STEEL LABOR SAVER BASE PLATES



Welded Top Plate

LS-3-DHS

Description	Item Number	Top Plate	Column Diameter	Assembled Height	Bulk Packed
Labor Saver 3" Column / 11" Plate / Table Ht.	LS-3-DHS	11" Square	3"	28-1/4"	8 / Box
Labor Saver 3" Column / 11" Plate/ Bar Ht.	LS-3-BHS	11" Square	3"	40-1/4"	8 / Box
Labor Saver 4" Column / 11" Plate / Table Ht.	LS-4-DHS	11" Square	4"	28-1/4"	8 / Box
Labor Saver 4" Column / 11" Plate / Bar Ht.	LS-4-BHS	11" Square	4"	40-1/4"	8 / Box

Base Plates →

Labor Saver System

BASE PLATE - STYLE X

FOR STAMPED STEEL LABOR SAVER COLUMNS



2001-BPS End Style



2002-BPS



2022-BPS



LS-3-DHS + 2022-BPS

Description	Item Number	Base Spread	For Column Diameter	Max Top Size	Bulk Packed
Base Plate / 5" x 22" / Smooth Black Matte / End Style	2001-BPS	5" x 22"	3"	36" x 60" (with 2 bases)	10 / Box
Base Plate / 22" x 30" / Smooth Black Matte / Style X	2002-BPS	22" x 30"	3"	36" x 42"	5 / Box
Base Plate / 22" x 22" / Smooth Black Matte / Style X	2022-BPS	22" x 22"	3"	30" x 30"	5 / Box
Base Plate / 30" x 30" / Smooth Black Matte / Style X	2030-BPS	30" x 30"	3"	36" x 36"	5 / Box
Base Plate / 36" x 36" / Smooth Black Matte / Style X	2036-BPS	36" x 36"	4"	54" Round	2 / Box

BASE PLATE - ROUND STYLE

FOR STAMPED STEEL LABOR SAVER COLUMNS



LS-3-DHS + 3322-BPS

Description	Item Number	Base Spread	For Column Diameter	Max Top Size	Packed
Base Plate / 18" Round / Smooth Black Matte	3318-BPS	18"	3"	30" X 30"	4 / Box
Base Plate / 22" Round / Smooth Black Matte	3322-BPS	22"	3"	36" x 36"	2 / Box
Base Plate / 30" Round / Smooth Black Matte	3330-BPS	30"	4"	48" Round	1 Each

2000-CHS SERIES - STYLE X

- Style X base
- Stamped Steel
- Chrome finish
- For indoor applications only
- Table and Bar height available
- This series cannot be cut down due to the chrome plating



Description - Table Height	Item Number	Base Spread	Top Plate	Column Diameter	Overall Height	Max Top Size	Packed
Table Base 5" x 22", End Style	2001-28-CHS	5" x 22"	11" Square	3"	28-1/4"	36" x 60" with 2 bases	1 Base
Table Base 22" x 30", Style X	2002-28-CHS	22" x 30"	11" Square	3"	28-1/4"	36" x 42"	1 Base
Table Base 22" x 22", Style X	2022-28-CHS	22" x 22"	11" Square	3"	28-1/4"	30" x 30"	1 Base
Table Base 30" x 30", Style X	2030-28-CHS	30" x 30"	11" Square	3"	28-1/4"	36" x 36"	1 Base

Description - Bar Height	Item Number	Base Spread	Top Plate	Column Diameter	Overall Height	Max Top Size	Packed
Table Base 5" x 22", End Style	2001-40-CHS	5" x 22"	11" Square	3"	40-1/4"	36" x 60" with 2 bases	1 Base
Table Base 22" x 30", Style X	2002-40-CHS	22" x 30"	11" Square	3"	40-1/4"	36" x 42"	1 Base
Table Base 22" x 22", Style X	2022-40-CHS	22" x 22"	11" Square	3"	40-1/4"	30" x 30"	1 Base
Table Base 30" x 30", Style X	2030-40-CHS	30" x 30"	11" Square	3"	40-1/4"	36" x 36"	1 Base

3000-CHS SERIES - ROUND

- Round base
- Stamped Steel
- Chrome finish
- For indoor applications only
- Table and Bar height available
- This series cannot be cut down due to the chrome plating



Description - Table Height	Item Number	Base Spread	Top Plate	Column Width	Overall Height	Max Top Size	Packed
Table Base 18" Round	3318-28-CHS	18"	11" Square	3"	28-1/4"	30" x 30"	1 Base
Table Base 22" Round	3322-28-CHS	22"	11" Square	3"	28-1/4"	36" x 36"	1 Base

Description - Bar Height	Item Number	Base Spread	Top Plate	Column Width	Overall Height	Max Top Size	Packed
Table Base 18" Round	3318-40-CHS	18"	11" Square	3"	40-1/4"	24" x 24"	1 Base
Table Base 22" Round	3322-40-CHS	22"	11" Square	3"	40-1/4"	30" x 30"	1 Base

STAMPED STEEL LABOR SAVER SYSTEM FOR OUTDOOR - WITH PronToe®

- Column and Spider are welded together and can be assembled to the base plate with only one bolt
- Stamped steel design
- Smooth matte black finish
- Includes a set of PronToe® table base leveler
- Zinc undercoat and outdoor powder coating for corrosion resistance.
- **To order, choose a column height and pair it with a Style X base plate**
(Ex. **LS-3-DHS-ZPT** + **2022-BPS-ZPT**)



PronToe®
THE BEST TABLE LEVELER
IN THE INDUSTRY



LS-3-DHS-ZPT
+
2022-BPS-ZPT

COLUMN WITH WELDED TOP PLATE FOR STAMPED STEEL LABOR SAVER BASE PLATES | OUTDOOR



Welded Top Plate LS-3-DHS-ZPT

Description	Item Number	Top Plate	Column Diameter	Assembled Height	Bulk Packed
Labor Saver 3" Column / 11" Plate / Zinc / Outdoor / Table Ht.	LS-3-DHS-ZPT	11" Square	3"	28-1/4"	8 / Box
Labor Saver 3" Column / 11" Plate / Zinc / Outdoor / Bar Ht.	LS-3-BHS-ZPT	11" Square	3"	40-1/4"	8 / Box
Labor Saver 4" Column / 11" Plate / Zinc / Outdoor / Table Ht.	LS-4-DHS-ZPT	11" Square	4"	28-1/4"	8 / Box
Labor Saver 4" Column / 11" Plate / Zinc / Outdoor / Bar Ht.	LS-4-BHS-ZPT	11" Square	4"	40-1/4"	8 / Box

BASE PLATE - STYLE X WITH PronToe® FOR STAMPED STEEL LABOR SAVER COLUMNS | OUTDOOR



2001-BPS-ZPT End Style



2002-BPS-ZPT



2022-BPS-ZPT



PronToe®

Description	Item Number	Base Spread	For Column Diameter	Max Top Size	Bulk Packed
Base Plate / 5" x 22" / Smooth Black Matte Zinc Undercoat & Outdoor Powder Coat / End Style	2001-BPS-ZPT	5" x 22"	3"	36" x 60" (with 2 bases)	10 / Box
Base Plate / 22" x 30" / Smooth Black Matte Zinc Undercoat & Outdoor Powder Coat / Style X	2002-BPS-ZPT	22" x 30"	3"	36" x 42"	5 / Box
Base Plate / 22" x 22" / Smooth Black Matte Zinc Undercoat & Outdoor Powder Coat / Style X	2022-BPS-ZPT	22" x 22"	3"	30" x 30"	5 / Box
Base Plate / 30" x 30" / Smooth Black Matte Zinc Undercoat & Outdoor Powder Coat / Style X	2030-BPS-ZPT	30" x 30"	3"	36" x 36"	5 / Box
Base Plate / 36" x 36" / Smooth Black Matte Zinc Undercoat & Outdoor Powder Coat / Style X	2036-BPS-ZPT	36" x 36"	4"	54" Round	2 / Box

CANTILEVERS

- For booth applications without sacrificing leg room
- Wall mounted
- Black powder coat finish
- Manufactured from 50mm square steel tubing
- 1.6mm wall thickness
- Tops in excess of the suggested top size should be supported additionally with our 380-7S-02 slim table leg at the end, to create additional stability



Slim Leg:
380-7S-02
380-7S-C1

Description	Item Number	Length	Width	Height	Max Top Length	Packed
Cantilever	CA1621	21"	18"	16"	24" - 30"	1 Each
Cantilever	CA1633	33"	18"	16"	36" - 48"	1 Each
Slim Table Leg - Black Glossy	380-7S-02	-	Ø 1-3/8"	27-3/4"	-	1 Each
Slim Table Leg - Polished Chrome	380-7S-C1	-	Ø 1-3/8"	27-3/4"	-	1 Each

FOOT RINGS

- Foot rings available to compliment both our Cast Iron and Stainless Steel table bases
- Simple to install
- All mounting hardware included



Description	Item Number	Diameter	Finish	Packed
Foot Ring for Cast Iron Columns, 3"	FOOTRING-3-CAST	19"	Black Matte	1 Each
Foot Ring for Cast Iron Columns, 4"	FOOTRING-4-CAST	19"	Black Matte	1 Each
Foot Ring for Stainless Steel Columns, 3"	FOOTRING STAINLESS	10" X 12"	Stainless Steel	1 Each

TABLE SHOXS

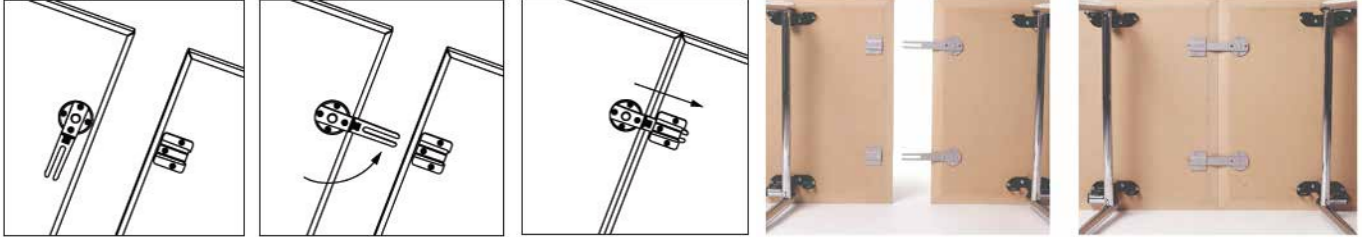
- Self leveling adjustment for table bases
- 400 lbs. load capacity per set of 4
- Auto-adjusts up to 5/16"
- Preferably for Style X Cast Iron bases
- Contains 4 levelers per box



Description	Item Number	Dimensions	Finish	Packed
Table Shox	TS1-52-1/4-20	1/4" - 20 thread	Black ABS with Zinc	4 per Box

CLICK CATCH TABLE TOP CONNECTOR

- Interlocking mechanism.
- Lets you join 2 table tops or flat panels together with a flush seam
- Bracket can be sold separately to use in multiple connecting positions



Description	Item Number	Diameter	Finish	Packed
Click Catch Table Top Connector (Latch & Bracket)	02.2403.140	5-7/8" (L= 150mm)	Zinc Plated	1 Each
Click Catch Attachment (Bracket Only)	02.2403.130	-	-	1 Each

CONNY TABLE TOP CONNECTOR

- Interlocking mechanism
- Lets you join 2 table tops or flat panels together with a flush seam
- 3 1/2" Diameter
- Set of 2 makes 1 complete connection
- Sold in sets
- Screws are not included



Description	Item Number	Diameter	Finish	Packed
Conny Table Top Connector	812-02-NY	3-1/2"	Zinc Die-Cast	1 Complete Set

PURSE RING

- Keeps purses off the floor and safe under the table
- Made for 3" Columns
- For Cast Iron bases only



Description	Item Number	Diameter	Finish	Packed
Purse Ring for 3" Columns, w/ 4 Hooks	PR-3-MT	3" Diameter	Black Matte	1 Each

GLASS TABLE TOP ADAPTERS

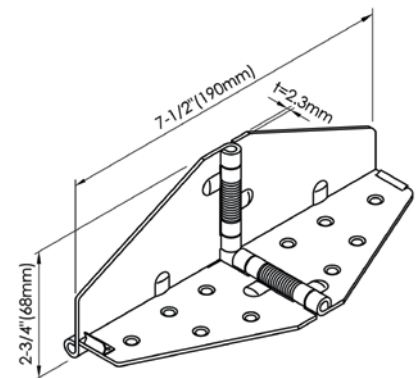
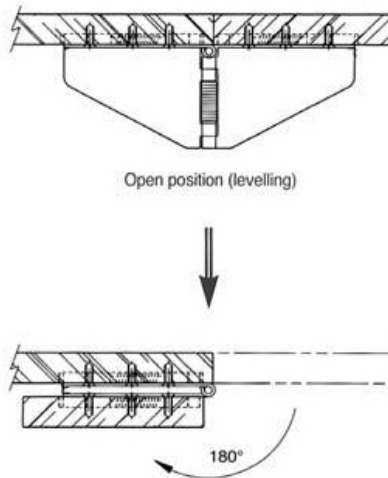
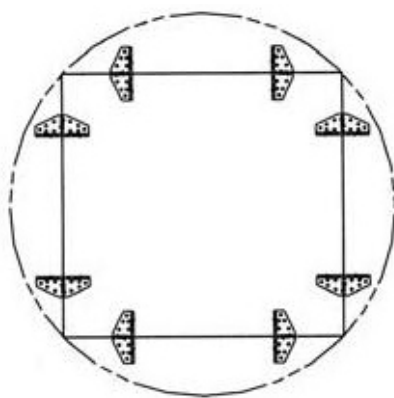
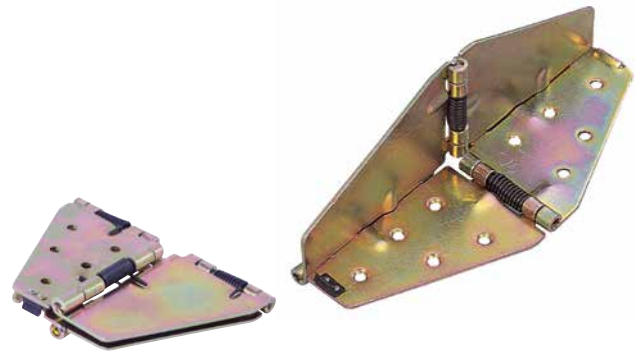
- Glass adapter for Stainless Steel bases
- 12mm Thread
- For Stainless Steel bases only



Description	Item Number	Diameter	Finish	Packed
Glass Table Top Adapter 90mm	GLASS-3-SS	90mm (3-1/2")	Stainless Steel	1 Each
Glass Table Top Adapter 220mm	GLASS-8-SS	220mm (8-2/3")	Stainless Steel	1 Each

FLIP-FLOP TABLE TOP HINGE

- Used to support a table leaf in the horizontal position
- Strong spring assists to lift and lock leaf in level position with table top
- Locks leaf underneath when not in use
- Converts square table to round table
- Packed 1 per box
- Screws not included
- **CAUTION** when handling to avoid finger injury. Hinge is under constant spring tension



Description	Item Number	Length	Finish	Packed
Flip-Flop Table Hinge	813-85-02	7-1/2"	Steel	1 Each



CONTACT INFO

1255 South Park Dr,
Kernersville, NC 27284 USA
Tel. 336-996-7774
Fax 336-996-1812
E-mail: info@petermeier.com
www.petermeier.com