

SMILE OUT LOUD!
It's never been so easy



CAMAR[®]
the art of innovation

PMI
PETER MEIER INC

THE SMILE SYSTEM

Floors are rarely level. This creates challenges and often requires the installer to crawl flat on the floor to make the necessary adjustments. The New Smile System eliminates these obstacles with the use of an Adjustment Tool which can be conveniently operated by hand with or without extension handle to save installation time. The new patented foot design provides an adjustment of the cabinet up to 1".



The Smile base cabinet leveler system offers innovative adjustment techniques suitable for all toe kick heights.



Patented Foot Design

Simply rotate for UP or DOWN Adjustment

Description	Item Number	Box Qty	Pallet Qty
SMILE SYSTEM, Leveler, Black - 3-3/4" - 4-3/4"	450-10-TT / Z	100 / 400	2,400
SMILE SYSTEM, Leveler, Black - 4-1/8" - 5-1/8"	450-11-TT / Z	100 / 400	2,400
SMILE SYSTEM, Leveler, Black - 4-7/8" - 5-7/8"	450-13-TT / Z	100 / 400	2,400
SMILE SYSTEM, Adjustment Tool	809-48-TT	50	-
SMILE SYSTEM, Aluminum Extension Handle (28" can be cut down to desired length)	809-60-TT	50	-

COMPATIBILITY

The smile system is conveniently compatible with the current line of ABS plastic sockets and toe kick clips available at Peter Meier Inc.

ABS SOCKETS



Wood Screw Mount



Hollow Bolt Mount



10mm & 15mm Exp. Knock In Dowel Mount



35mm Knock In Socket Mount

Description	Item Number	Mount	Box Qty	Pallet Qty
Plastic Socket, Wood Screw	840-H5-P2	Wood Screw	100	9,600
Plastic Socket, Wood Screw (Bulk)	840-H5-P2Z	Wood Screw	400	9,600
Plastic Socket with Hollow Bolt	840-00-R1	Hollow Bolt	100	9,600
Plastic Socket with Hollow Bolt (Bulk)	840-00-R1Z	Hollow Bolt	400	9,600
Plastic Socket, 10mm Exp. Knock In Dowel	840-10-P2	Dowel / Screw	100	7,200
Plastic Socket, 10mm Exp. Knock In Dowel (Bulk)	840-10-P2Z	Dowel / Screw	400	7,200
Plastic Socket, 15mm Exp. Knock In Dowel	840-15-P2	Dowel / Screw	100	7,200
Plastic Socket, 15mm Exp. Knock In Dowel (Bulk)	840-15-P2Z	Dowel / Screw	400	7,200
Plastic Socket, 35mm Knock In	840-F5-00	Knock In	100	7,200
Plastic Socket, 35mm Knock In (Bulk)	840-F5-00Z	Knock In	400	7,200

TOE-KICK CLIPS



Screw Mount



2-Finger Clip



4-Finger Clip



Screw Mount



Adhesive Mount



Adhesive Mount



4mm Groove Mount

Description	Item Number	Box Qty
2-Finger Screw Mount	228-V1-T2	100
2-Finger Adhesive Mount	228-AD-E2	100
2-Finger 4mm Groove Mount	228-AN-C2	100
4-Finger Screw Mount	202-V1-T2	100
4-Finger Adhesive Mount	202-AD-E2	100
4-Finger 4mm Groove Mount	202-AN-C2	100



4mm Groove Mount

WHY SMILE SYSTEM CABINET LEVELERS?

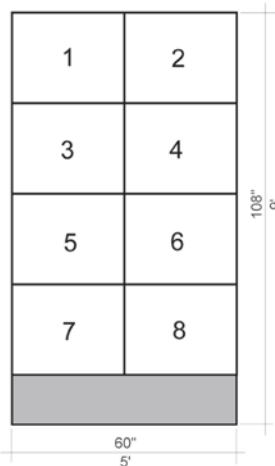
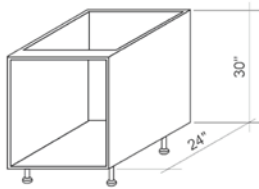
- Save Valuable time during base cabinet installation
- Easiest base cabinet leveling adjustment system in the industry
- The Smile System Adjustment Tool and Extension Handle creates simplicity in making needed base cabinet leveling adjustments
- Maximize CNC nesting output and panel-cutting yield by eliminating the base cabinet toe-kick notch
- Approximately 12% space-saving solution when shipping base cabinets without a toe-kick notch
- Minimize water damage to the cabinets as levelers elevate cabinets from directly touching the floor
- Eliminate water damage to base cabinets created from mopping and cleaning floors
- Great space created for hiding wires, plumbing pipes, etc
- Designed, developed and manufactured in Italy
- Made out of a long-lasting high impact ABS plastic
- Three heights to choose from: 3-3/4" to 4-3/4", 4-1/8" to 5-1/8" and 4-7/8" to 5-7/8"
- Wide variety of socket mounting types: Screw Mount, Hollow Bolt, 10mm & 15mm Expandable Knock In Dowel and 35mm Knock In
- Weight capacity: 330 lbs per leveler
- Floating side-to-side toe-kick adjustment via Toe-Kick Clips
- Strong metal Toe-Kick Clips with 2-Finger and 4-Finger attachment available in: Screw Mount, Adhesive Mount and 4mm Groove Mount
- Protect base cabinet finished side panels when using Sockets as skid plates
- Firm fitting connection of the Cabinet Leveler to the Socket ensures stability and will not fall out of the Socket during installation
- Each Cabinet Leveler is adjusted to a break-away tab on the Cabinet Leveler at the factory, ensuring a neutral height starting position on all the cabinet levelers

5' x 9' SHEET YIELD (Gain of 2 end panels)

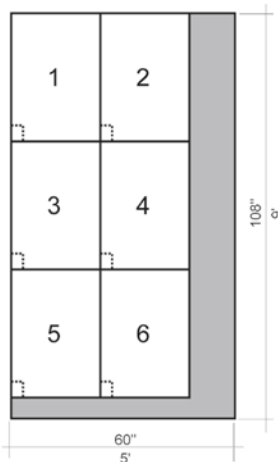
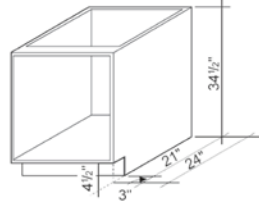
YIELD BENEFITS

4' x 8' SHEET YIELD (Gain of 1 end panel)

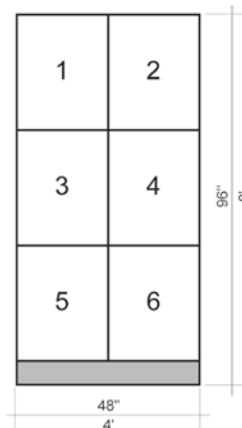
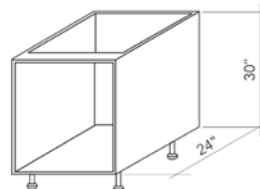
No Toe-Kick Notch



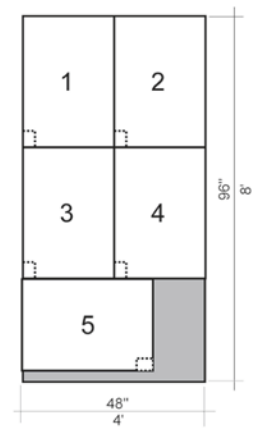
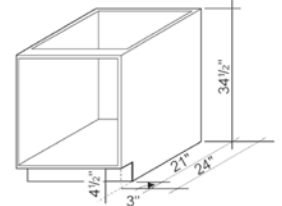
With Toe-Kick Notch



No Toe-Kick Notch



With Toe-Kick Notch



1-800-222-6941

info@petermeier.com | petermeier.com



SSCL1323

March 2023 / Smile System 1.2

DIGITAL CATALOG