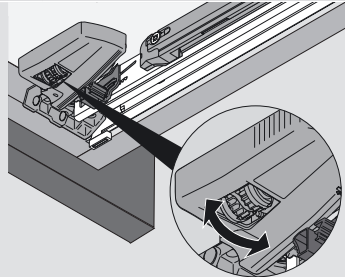


Front side-to-side adjustment

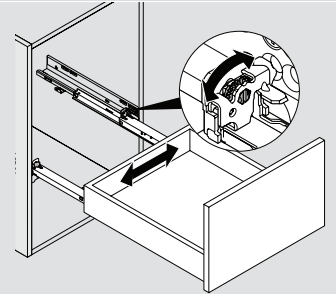
Rotate side-to-side adjustment left or right on both locking devices. Drawer front moves in the same direction as rotation.



Maximum **1.5** (1/16") to left or right (tool-free)

Rear side-to-side adjustment

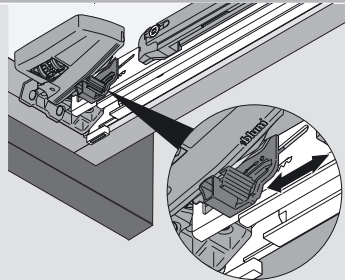
Rotate side-to-side adjustment left or right on the rear hook of the right hand runner. Drawer back moves in the same direction as rotation.



Maximum **1.5** (1/16") to left or right (tool-free)

Height adjustment

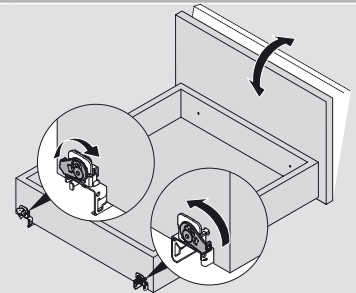
Press up on adjustment tab and push toward back of drawer.



Maximum **3** (1/8") rise of drawer front (tool-free)

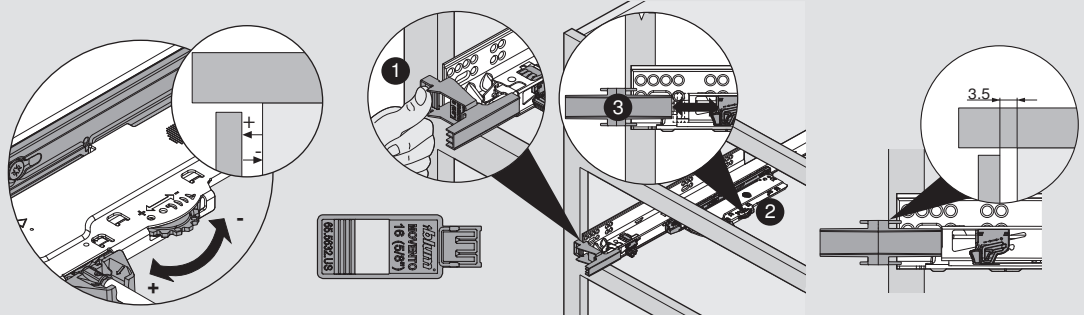
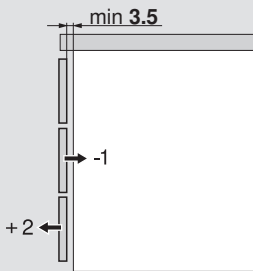
Tilt adjustment

Rotate the tilt adjustment lever on the rear of each runner to tilt the top of the drawer front forward.



Maximum **5** (3/16") rise of drawer back (tool-free)

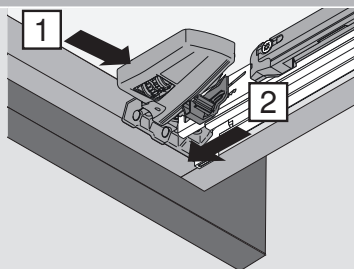
Depth adjustment



NOTE: For **16** (5/8") sub-front thickness

Drawer removal

Squeeze orange release levers on locking devices
Pull drawer out and up.



Insert drawer

Extend the runners fully. Place the drawer on the runners and close. The locking devices automatically engage with the runners. Make adjustments if necessary.

