

Recess/surface mounted lights

Monochrome, drill hole Ø: 26 mm (1")



Häfele Loox5 LED 2090/3090



> Narrow beam angle for staging objects

- > Dimmable: Yes
- > Material: Aluminum
- > Energy efficiency class: A+
- > Degree of protection: IP44 as recess mounted light
IP20 as surface mounted light
- > Mounting: For mounting in drilled hole,
for clamp or screw fixing
- > Drill hole Ø: 26 mm (1")
- > Supplied with: 1 light module with 2000 mm
(78 3/4") lead

2700 K	3000 K	4000 K	5000 K	55°	
930 lx	990 lx	1005 lx	1005 lx		250 mm (9 13/16")
230 lx	240 lx	250 lx	260 lx		500 mm (19 11/16")
95 lx	100 lx	110 lx	115 lx		750 mm (29 1/2")
50 lx	55 lx	60 lx	60 lx		1000 mm (39 3/8")

LED 2090

2700 K	3000 K	4000 K	5000 K	55°	
825 lx	870 lx	935 lx	940 lx		250 mm (9 13/16")
220 lx	225 lx	235 lx	245 lx		500 mm (19 11/16")
95 lx	95 lx	100 lx	105 lx		750 mm (29 1/2")
50 lx	55 lx	55 lx	60 lx		1000 mm (39 3/8")

LED 3090



Note

The IP44 degree of protection is reduced to IP20 when surface mounting or recess mounting with through hole.

Loox lights and drivers are "Suitable for use within closet storage spaces"

Order reference

Please order housing separately, see page 49.



5 12V

Loox5 12 V driver see page 124

5 24V

Loox5 24 V driver see page 125

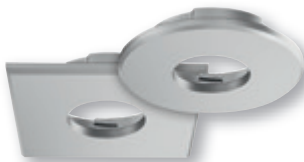
Recess/surface mounted lights

Monochrome, drill hole Ø: 26 mm (1")

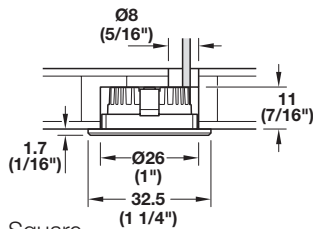


Häfele Loox5 LED 2090 / 3090

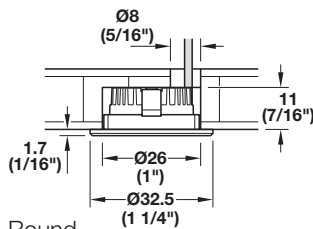
Voltage V	Quantity LEDs	Color temperature K	Wattage W	Luminous flux lm	Luminous efficacy lm/W	Color rendering index CRI		Weighted energy consumpt. kWh/1000 h	Item No.	
						R _a	R ₉			
5 12V	1	LED 2090								
		2700	1.2	80	67	>90	>60	1.32	833.72.470	
		3000	1.2	90	75	>90	>60	1.32	833.72.471	
		4000	1.2	95	79	>90	>60	1.32	833.72.472	
		5000	1.2	100	83	>90	>60	1.32	833.72.473	
5 24V	1	LED 3090								
		2700	1.2	75	63	>90	>60	1.32	833.75.170	
		3000	1.2	80	67	>90	>60	1.32	833.75.171	
		4000	1.2	80	67	>90	>60	1.32	833.75.172	
		5000	1.2	85	71	>90	>60	1.32	833.75.173	



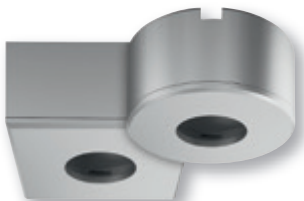
Recess mount housing



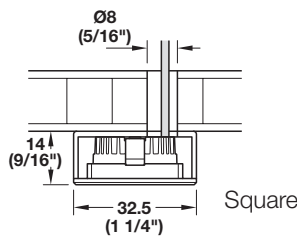
Square



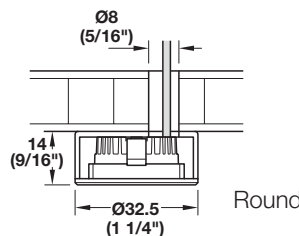
Round



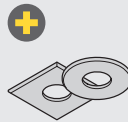
Surface mount housing



Square

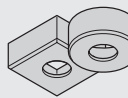


Round



> Housing, recess mounted, Plastic

Color	Round	Square
Black	833.89.225	833.89.232
Anthracite	833.89.226	833.89.233
Brown	833.89.227	833.89.234
Matt nickel-plated	833.89.223	833.89.230
Stainless steel colored	833.89.228	833.89.235
Silver colored	833.89.222	833.89.229
White, RAL 9003	833.89.224	833.89.231



> Housing, surface mounted, Plastic

Color	Round	Square
Black	833.89.239	833.89.246
Anthracite	833.89.240	833.89.247
Brown	833.89.241	833.89.248
Matt nickel-plated	833.89.237	833.89.244
Stainless steel colored	833.89.242	833.89.249
Silver colored	833.89.236	833.89.243
White, RAL 9003	833.89.238	833.89.245

Dimensional data not binding. Dimensions in mm, inches are approximate. We reserve the right to alter specifications without notice.