

Lutron stand alone

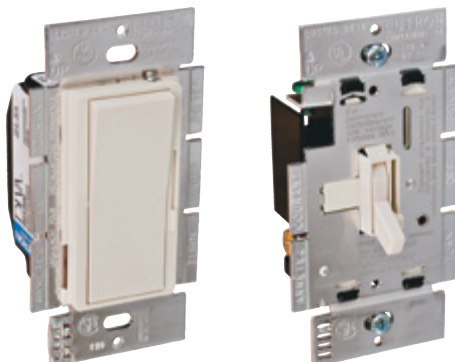
Wall dimming controls 2 wire low voltage (LV)



Wall dimming controls - 110-120 VAC

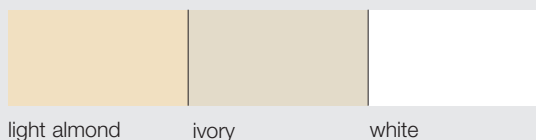
Diva

Ariadni



- > Material: Plastic, Aluminum
- > Wattage: 600
- > L x W x H: 115 x 57 x 55 mm (4 1/2" x 2 1/4" x 2 3/16")
- > Supplied with: Mounting screws, wire nuts, installation instructions

Color	Diva	Ariadni
Light almond	820.66.452	820.66.455
Ivory	820.66.652	820.66.655
White	820.66.752	820.66.755



Wall plates

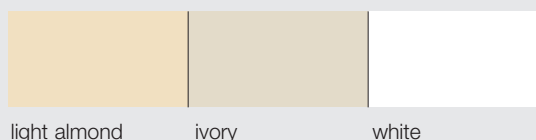
Diva

Ariadni



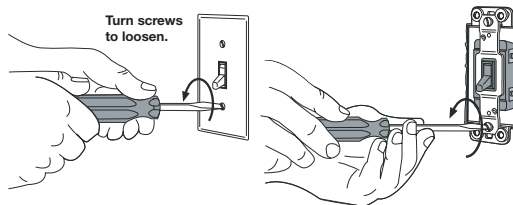
- > Material: Plastic
- > L x W x H: 120 x 70 x 10 mm (4 3/4" x 2 3/4" x 3/8")
- > Supplied with: Mounting screws, cover plate

Color	Diva	Ariadni
Light almond	820.66.453	820.66.456
Ivory	820.66.653	820.66.656
White	820.66.753	820.66.756



! Control multiple LED light bars, LED strip lights and pucks up to 600 W. Great for dining rooms, bedrooms, bathrooms, and kitchens. Dimming offers energy savings over standard wall switches. Dimming to 1% with smooth, continuous, flicker-free performance. Arrives ready to install. Input voltage: 110 - 120 VAC, 60 Hz, 600 VA / 450 W Operate between 32 °F (0 °C) and 104 °F (40 °C). 0% to 90% humidity, non-condensing 12 VDC E-Series drivers see page 134. 24 VDC E-Series drivers see page 136. Lutron drivers see pages 133, 135, 137, 138.

! For installation by a qualified electrician in accordance with all local and national electrical codes. Use copper conductors only. For indoor use only. Check to see that the driver type and rating are suitable for the application. **Compatible with E-series and Lutron Low Voltage Drivers.** DO NOT install if product has any visible damage. If moisture or condensation is evident, allow the product to dry completely before installation.



Lutron stand alone

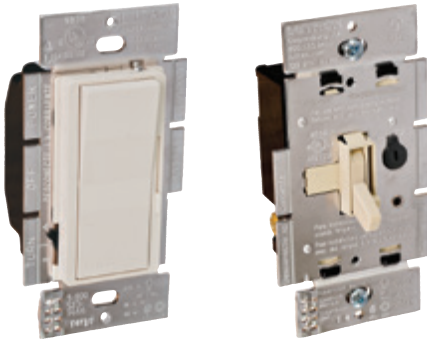
Wall dimming controls 2 wire forward phase (CL)



Diva and Ariadni wall dimming controls

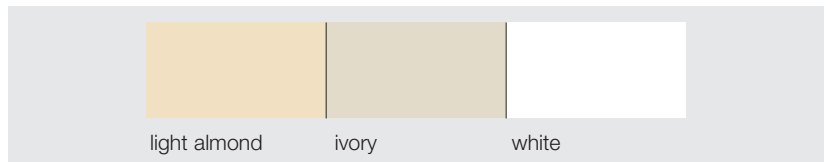
Diva

Ariadni



- > Material: Plastic, Aluminum
- > Wattage: 150
- > L x W x H: 115 x 57 x 55 mm (4 1/2" x 2 1/4" x 2 3/16")
- > Supplied with: Mounting screws, wire nuts, installation instructions

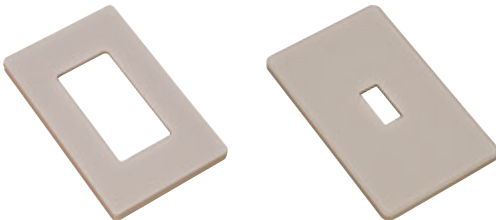
Color	Diva	Ariadni
Light almond	820.66.451	820.66.454
Ivory	820.66.651	820.66.654
White	820.66.751	820.66.754



Diva and Ariadni wall plates

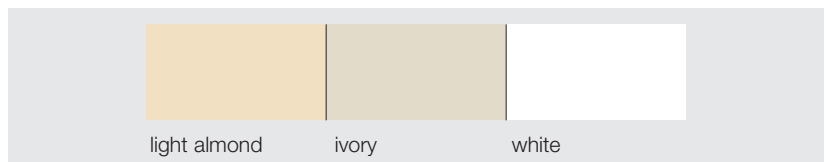
Diva

Ariadni



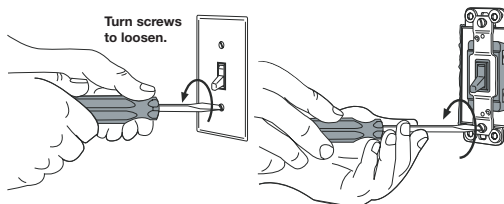
- > Material: Plastic
- > L x W x H: 120 x 70 x 10 mm (4 3/4" x 2 3/4" x 3/8")
- > Supplied with: Mounting screws, cover plate

Color	Diva	Ariadni
Light almond	820.66.453	820.66.456
Ivory	820.66.653	820.66.656
White	820.66.753	820.66.756



! Control up to 150 W of LED light bars, LED strip lights or pucks. Great for dining rooms, bedrooms, bathrooms, closets and kitchens. Dimming offers energy savings over standard wall switches. Dimming to 1% with smooth, continuous, flicker-free performance. Arrives ready to install. Input voltage: 110 - 120 VAC, 60 Hz Operate between 32 °F (0 °C) and 104 °F (40 °C). 0% to 90% humidity, non-condensing 12 VDC E-Series drivers see page 134. 24 VDC E-Series drivers see page 136. Lutron drivers see pages 133, 135, 137, 138.

! For installation by a qualified electrician in accordance with all local and national electrical codes. Use copper conductors only. For indoor use only. Check to see that the driver type and rating are suitable for the application. **Compatible with E-series and Lutron Low Voltage Drivers.** DO NOT install if product has any visible damage. If moisture or condensation is evident, allow the product to dry completely before installation.



Dimensional data not binding. Dimensions in mm, inches are approximate. We reserve the right to alter specifications without notice.

