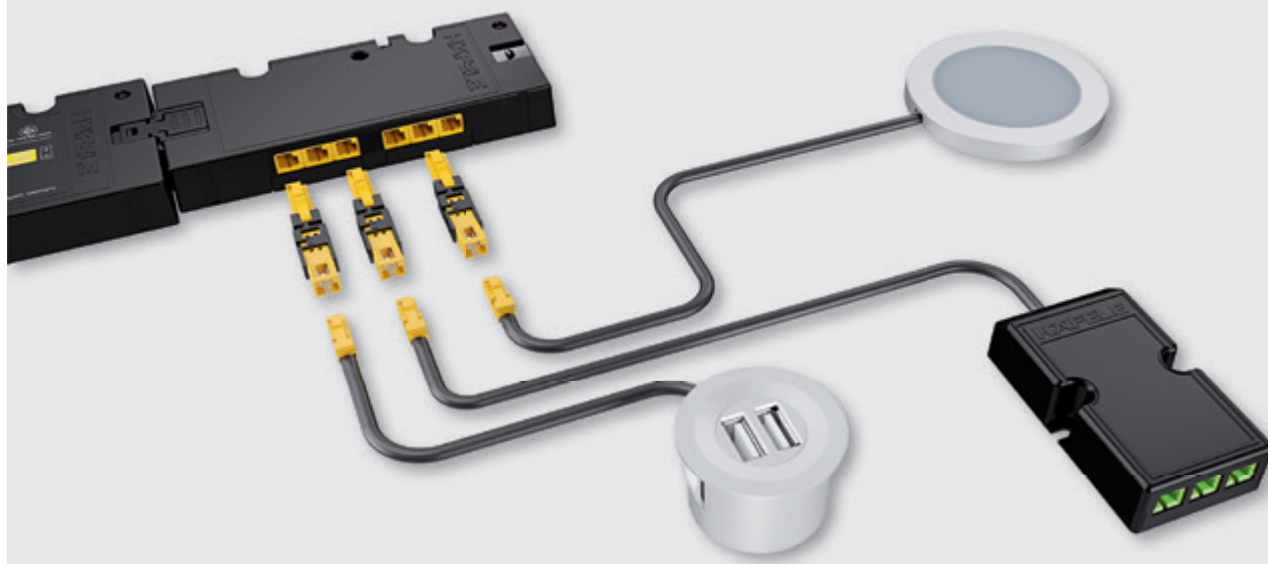


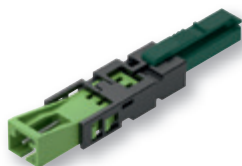
# Adapter

Loox5 driver > Loox device

**Adapter for devices with Loox plug - for connecting to Loox5 driver**



12 V: Loox socket/Loox5 plug



24 V: Loox socket/Loox5 plug

> Area of application:

For connecting Loox devices to Loox5 drivers or Loox5 distributors. Suitable for all devices with Loox plug, e.g. monochrome lights, distributors, charging stations, color mixers for multi-white and RGB as well as electrically operated fittings, converters, etc.

> Length:

50 mm (2")

> Current carrying capacity:

Max. 3.5 A

> Drill hole Ø:

12 mm (1/2")

> Packing

6 pcs.

Device	Driver	Max. connected wattage W	Item No.
12 V	5 12 V	Max. 42	833.95.753
24 V	5 24 V	Max. 84	833.77.838



Not suitable for 3-wire Loox plugs (multi-white) or 4-wire Loox plugs (RGB).

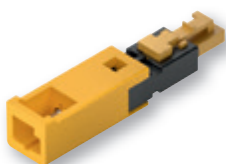
The current carrying capacity is limited to 3.5 A.

Observe maximum wattage.

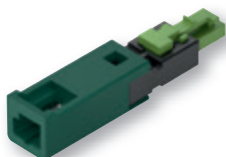
# Adapter

Loox driver > Loox5 device

**Adapter for devices with Loox5 plug - for connecting to Loox driver**



12 V: Loox5 socket/Loox plug



24 V: Loox5 socket/Loox plug

- > Area of application: For connecting Loox5 devices to Loox drivers or Loox distributors. Suitable for all devices with 2-wire Loox5 plug, e.g. monochrome lights, distributors, charging stations, etc.
- > Length: 45 mm (1 3/4")
- > Current carrying capacity: Max. 3.5 A
- > Drill hole Ø: 13 mm (1/2")
- > Packing: 6 pcs.

Device	Driver	Max. connected wattage W	Item No.
5 12 V	12 V	Max. 42	833.95.752
5 24 V	24 V	Max. 84	833.77.837

**!** Not suitable for 4-wire Loox5 plugs (multi-white or RGB).  
The current carrying capacity is limited to 3.5 A.  
Observe maximum wattage.

**Adapter leads for LED strip lights with Loox5 clip - for connecting to Loox driver or color mixer**

> Length: 2000 mm (78 3/4")

Device	Driver/color mixer	for LED strip light	Item No.
5 12 V	12 V	monochrome 5 mm (3/16")	833.72.742
		monochrome 8 mm (5/16")	833.72.716
		multi-white 8 mm (5/16")	833.72.717
		RGB 10 mm (3/8")	833.72.718
5 24 V	24 V	monochrome 5 mm (3/16")	833.75.732
		monochrome 8 mm (5/16")	833.75.705
		multi-white 8 mm (5/16")	833.75.706
		RGB 10 mm (3/8")	833.75.707